



Manage this device with Digi Remote Manager

DIGI IX15

Programmable gateway connects Digi XBee®-enabled devices to remote applications over cellular and Ethernet

The versatile **Digi IX15** functions as both gateway and router for customers seeking lower-cost, quicker-to-market alternatives to chip-down DIY designs for networking operations. The industrial-grade Digi IX15 connects Digi XBee® modules to cloud applications over cellular or Ethernet, providing the easiest path to Internet connectivity for the **Digi XBee ecosystem** of hardware, software, services and award-winning tools.

With certification for Class 1 Division 2 deployment and rugged enclosure, Digi IX15 is ideal for the harsh environments found in oil and gas, water/wastewater, solar, agriculture and other industrial applications. For developers needing a highly secure, common platform to cut costs and time-to-market, Digi IX15 reduces risk and drives project efficiencies.

The Digi IX15 gateway includes a simple, open source Python

development environment that enables custom applications to perform edge computing locally while providing the most optimal, resilient connectivity between your XBee network and cloud-based applications.

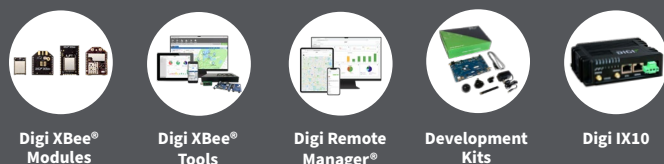
Gain critical insights into your deployed devices and manage your network with **Digi Remote Manager®** (Digi RM) — the command center for your deployment. Digi RM is a cloud-based solution that facilitates easy setup, mass configuration, maintenance and visibility into the health of your network, whether you deploy dozens or thousands of devices.

In the event of an interruption to your primary network connection, Digi RM also provides secure terminal access for out-of-band management of edge devices via serial port and command-line interface.

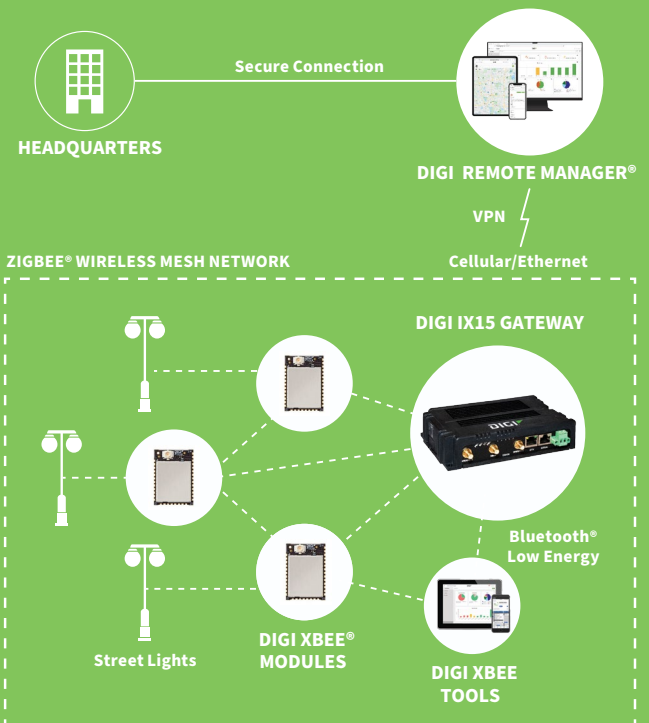
FEATURES AND BENEFITS

- **Digi XBee®**, (**Zigbee®**, **DigiMesh®**, 802.15.4), Bluetooth® 5.0 and RS-232/485 for connection to local devices
- Open source Python environment for custom application development
- LTE Cat 4 cellular and 10/100 Ethernet WAN connectivity
- **Digi Remote Manager®** platform for easy setup, mass configuration/firmware updates, remote device management and out-of-band management
- Full-featured industrial cellular routing platform
- Redundant connectivity with dual SIMs and **Digi SureLink®**
- Built-in **Digi TrustFence®** for device security, device identity and data privacy

RELATED PRODUCTS



APPLICATION EXAMPLE



SPECIFICATIONS

DIGI IX15

DIGI XBEE®

XBEE MODULE	Standard: Digi XBee® 3 Zigbee® 3.0 MMT (XB3-24Z8UM-J); PRO: Digi XBee® 3 PRO Zigbee® 3.0 MMT (XB3-24Z8UM)
ZIGBEE STACK	Zigbee® Standard and Zigbee® PRO versions available
ZIGBEE TRANSMIT POWER	Standard: 6.3 mW (8 dBm); PRO: 63 mW (18 dBm)
ZIGBEE RECEIVER SENSITIVITY	-102 dBm
BLUETOOTH® VERSION	Supports BLE 4.2 and capable of interoperating with BLE 5.0 devices that support 1M PHY. Hardware is software upgradable to 5.0 but not yet enabled except payload extensions (future release).
XBEE CONNECTOR	(1) 50 Ω RP-SMA (center pin: male)

CELLULAR

CERTIFICATIONS	Visit www.digi.com/resources/certifications for latest cellular certifications
BANDS	LTE Cat 4: B1, B2, B3, B4, B5, B7, B8, B12, B13, B18, B19, B20, B25, B26, B28, B38, B39, B40, B41 3G: B1, B2, B4, B5, B6, B8, B19 2G EDGE / GPRS: 850 / 900 / 1800 / 1900 MHz
CONNECTORS	(2) 50 Ω SMA (center pin: female)
SIM SLOTS	(2) Mini-SIM (2FF)
SIM SECURITY	Behind SIM cover, secured with screw (#1 Phillips)

SOFTWARE AND MANAGEMENT

PYTHON	Python 3
REMOTE MANAGMENT	Digi Remote Manager®; SNMP v2/v3 (user installed/managed)
LOCAL MANAGMENT	WebUI (HTTP/HTTPS); CLI (Telnet, SSH)
MANAGEMENT / TROUBLESHOOTING TOOLS	FTP client, SCP; protocol analyzer with PCAP for Wireshark; event logging with syslog and SMTP client; NTP/SNTP; Nagios, Intelliflow, iPerf, Dynamic DNS, ping, traceroute

ETHERNET

PORTS	(1) RJ-45; 10/100 Mbps (auto-sensing)
--------------	---------------------------------------

SERIAL

PORTS	(1) RJ-45 10-pin (10P10C); RS-232/485; software selectable - RS-232 DTE (RXD, TXD, RTS, CTS, DTR, DCD, DSR, RI) - RS-485 (TX/RX+; RX/TX-); half-duplex
--------------	--

PHYSICAL

DIMENSIONS (L x W x H)	157 mm x 106 mm x 35 mm (6.18 in x 4.17 in x 1.38 in)
WEIGHT	0.39 kg (0.86 lb)
STATUS LEDs	Power, SIM, LTE/Internet, XBee, signal strength (5)
ENCLOSURE	Glass-filled polyphenylene sulphide (PPS) / IP30

POWER REQUIREMENTS

POWER INPUT	9 - 30 VDC, 1.0 A maximum
POWER CONSUMPTION	2.5 W typical (idle); 6 W typical (peak Tx/Rx)

ENVIRONMENTAL

OPERATING TEMPERATURE	-40° C to 74° C (-40° F to 165° F); device performance may be impacted above 60° C (140° F)
RELATIVE HUMIDITY	5% to 95% (non-condensing)

APPROVALS

CELLULAR AND REGULATORY	Visit www.digi.com/resources/certifications for latest cellular and regulatory approvals
SAFETY	UL60950-1, IEC62368-1, CB, EN62311, UL 121201/CSA 213 (Class 1, Div 2)
ENVIRONMENTAL	ROHS3
EMISSIONS / IMMUNITY	CE; RED; FCC Part 15, Subpart B*; ICES-003; AU/NZS CISPR32

WARRANTY

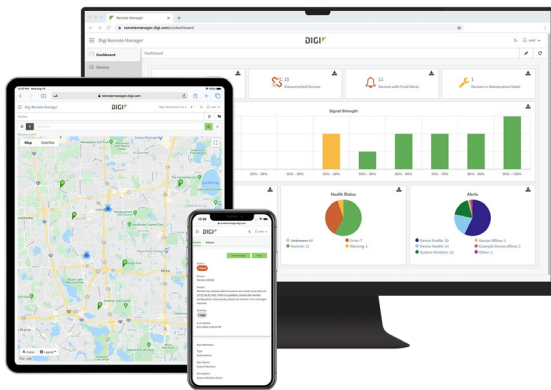
PRODUCT WARRANTY	3-year**
-------------------------	----------

* Compliant to limits for a Class A digital device when tested with power supply 76002104.

**Standard 3-year warranty upgradeable to 5 years with purchase of a Digi Remote Manager Premier 5-year subscription applicable to the product purchased only at the time of product purchase and with product registration at that time in Digi Remote Manager.

ENTERPRISE SOFTWARE	DESCRIPTION
PROTOCOL SUPPORT	HTTPS, FTP client, TLS v1.2, SCP (client and server), SFTP, SMTP client for use by scripts and the command line, SNMP (v2/v3), SSH; remote management via Digi Remote Manager [®] ; protocol analyzer, ability to capture PCAP for use with Wireshark; DynDNS; dynamic DNS client compatible with BIND9/No-IP/DynDNS; captive portal, Intelliflow; Nagios, DNS server, NTP server, multicast, mDNS, IPPerf
SECURITY	IP filtering, stateful firewall, custom firewall rules (iptables), address and port translation; TLS 1.2 and above, OpenVPN client and server; VPN tunnels; authentication: RADIUS, TACACS+; certificates; MAC address filtering; VLAN support
VPN	IPSec with IKEv1, IKEv2, NAT Traversal; OpenVPN client and server; GRE VPN tunnels; cryptology: SHA-1/256/384/512, MD5, RSA; encryption: 3DES and AES up to 256-bit (CBC mode for IPsec); Diffie Hellman: DH groups 1-32 (CURVE448)
ROUTING / FAILOVER	IP pass-through; NAT, NAPT with IP port forwarding; GRE; multicast routing; routing protocols: RIP (v1, v2) OSPF, BGP; IP failover: VRRP; automatic failover, Digi SureLink [®]
OTHER PROTOCOLS	DHCP; dynamic DNS client compatible with No-IP/DynDNS

DIGI REMOTE MANAGER[®]



Digi Remote Manager is the technology platform that brings networks to the next level, allowing networks — and the people who manage them — to work smarter. With Digi Remote Manager you can transform a multitude of dispersed IoT devices into a dynamic, intelligent network. Now you can easily deploy, monitor and diagnose thousands of mission-critical devices from a single point of command — on your desktop, tablet or phone. All the while, its software-defined security diligently safeguards your entire Digi ecosystem.

Learn more at www.digi.com/digi-remote-manager

CAPABILITIES

- Activate, monitor and diagnose your mission-critical devices from a single point of command and control — on your desktop or mobile app
- Schedule key operations — including firmware updates and file management — on a single device or on a group of devices, keeping your network functionality up-to-date and maintaining compliance standards
- Manage edge devices out-of-band via console terminal access
- Keep tabs on device health and connectivity across device deployments of any size
- Create detailed reports and enable real-time alerts for specified conditions
- Integrate device data through open APIs to gain deeper insights and control with third-party applications
- Report and alert on performance statistics, including connection history, signal quality, latency, data usage and packet loss

INFRASTRUCTURE

- Hosted in a commercial-grade cloud server environment that meets SOC 1[®], SOC 2[®] and SOC 3[®] standards
- Superior availability, operating to 99.9% or greater
- Open APIs available to support application development

SECURITY

- More than 175 security controls in place to protect your data
- Member of the Center for Internet Security[®] (CIS[®])
- Enables compliance with security frameworks like ISO27002, HIPAA, NIST and more
- Earned Skyhigh's CloudTrust[™] Program highest rating of Enterprise-Ready

PRODUCT IMAGES

FRONT



BACK



PART NUMBERS	DIGI IX15
IX15-00G4-XB2	Digi IX15 - XBee 3, LTE Cat 4, (1) Ethernet, RS-232/485
IX15-00G4-XBP2	Digi IX15 - XBee 3 PRO, LTE Cat 4, (1) Ethernet, RS-232/485

PART NUMBERS	ACCESSORIES*
76002107	Digi IX15 2.4 GHz Accessory Kit
76002104	Power supply with plug tips for US, UK, EU, AU
DC-ANT-24DT	(1) Magnetic table-top 2.4 GHz antenna
76002103	(1) Cellular antenna (order quantity 2)
76002095	DIN rail clip kit
76000645	Cable, RJ45M/DB09F, 48", connects EIA 422/485 devices to Digi products that have 10-pin RJ-45 connectors**

*Sold separately, unless otherwise noted.

**For RS-232 cabling pinouts and recommended cables, please refer to the Digi products cabling guide at: www.digi.com/resources/documentation/Digidocs/PDFs/90000253.pdf

PART NUMBERS	DIGI REMOTE MANAGER®
DIGI-RM-PRM-1YR	Digi Remote Manager Premier - 1-year subscription
DIGI-RM-PRM-3YR	Digi Remote Manager Premier - 3-year subscription
DIGI-RM-PRM-5YR	Digi Remote Manager Premier - 5-year subscription

FOR MORE INFORMATION
PLEASE VISIT DIGI.COM

DIGI SERVICE AND SUPPORT / You can purchase with confidence knowing that Digi is always available to serve you with expert technical support and our industry leading warranty. For detailed information visit www.digi.com/support.

© 2023 Digi International Inc. All rights reserved.

All trademarks are the property of their respective owners.

91004450
B6/1123

DIGI INTERNATIONAL WORLDWIDE HQ
877-912-3444 / 952-912-3444 / www.digi.com

DIGI INTERNATIONAL JAPAN
+81-3-5428-0261 / www.digi-intl.co.jp

DIGI INTERNATIONAL GERMANY
+49-89-540-428-0

DIGI INTERNATIONAL SINGAPORE
+65-6213-5380

DIGI INTERNATIONAL CHINA
+86-21-50492199 / www.digi.com.cn

