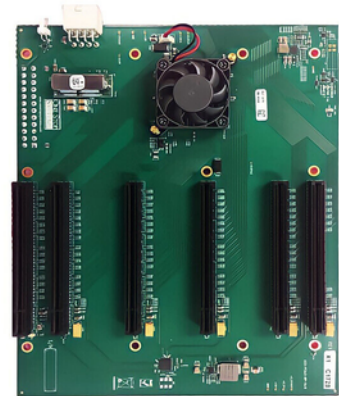


5-Slot PCIe Gen3 x16

Compact PCIe Gen3 expansion backplane with five x16 slots for professional data centers and workstations

Features

- 5x PCIe Gen3 x16 expansion slots
- Supports OSS PCIe Gen3 x16 target cable adapters in dedicated target slot
- ATX-compatible design for easy integration into standard chassis
- Integrated fan controller to optimize cooling performance
- ATX 24-pin and 8-pin EPS12V connectors for stable power supply



5-slot PCIe Gen3 x16 backplane – expansion solution for high-performance PCIe systems

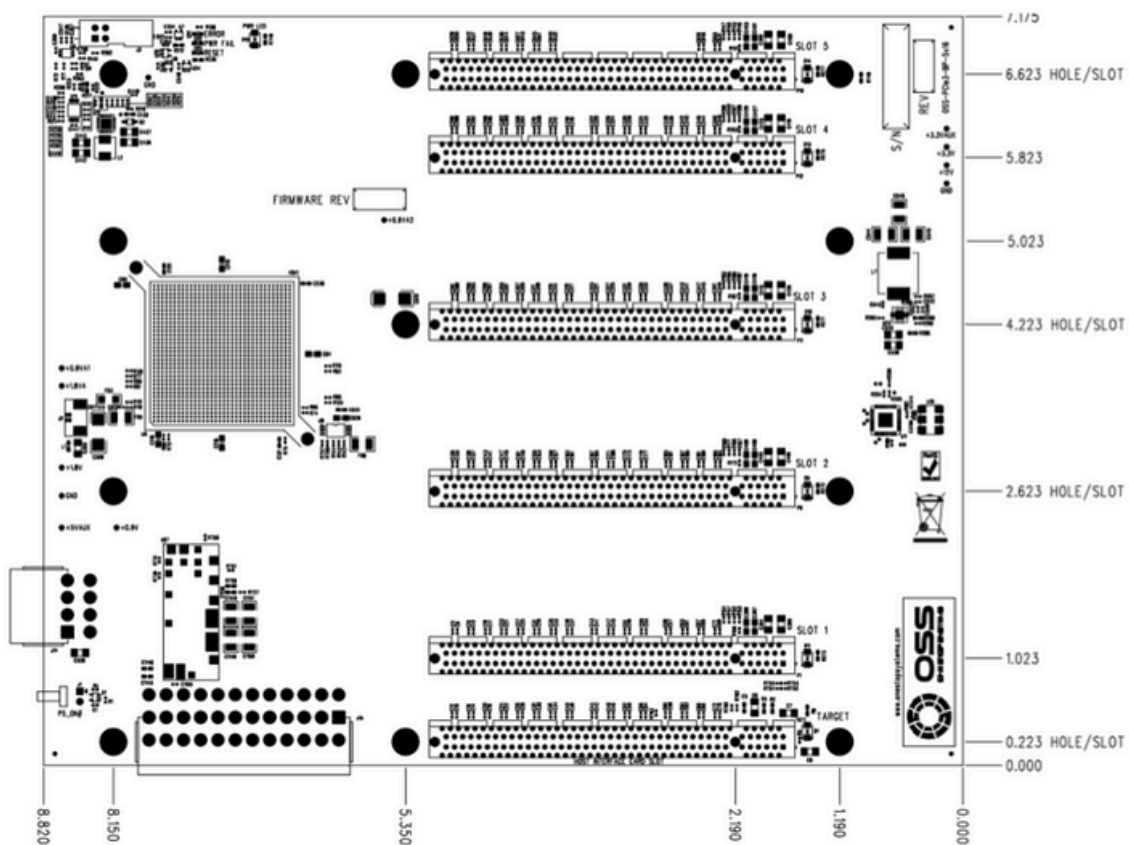
The 5-slot PCIe Gen3 x16 backplane is a powerful and flexible PCIe expansion solution specifically designed for OSS target adapters and high-performance expansion cards. It provides a dedicated PCIe x16 Gen3 target slot for OSS target adapter cards and five PCIe x16 Gen3 expansion slots (electrical and mechanical x16).

Maximum PCIe expansion with five PCIe Gen3 x16 slots

Thanks to full backwards compatibility with PCIe Gen1 and Gen2 cards, this backplane enables seamless integration into existing systems. It complies with PCIe PCI-SIG specifications and ensures reliable, high-bandwidth data transmission for applications in AI, HPC, industrial automation and test environments.

The backplane is powered via an ATX 24-pin power connector and an 8-pin EPS12V connector, providing a compatible and stable power supply for a wide range of expansion cards. With its compact dimensions of 182 x 224 mm, it can be easily integrated into standard and customized enclosures.

Dimensions



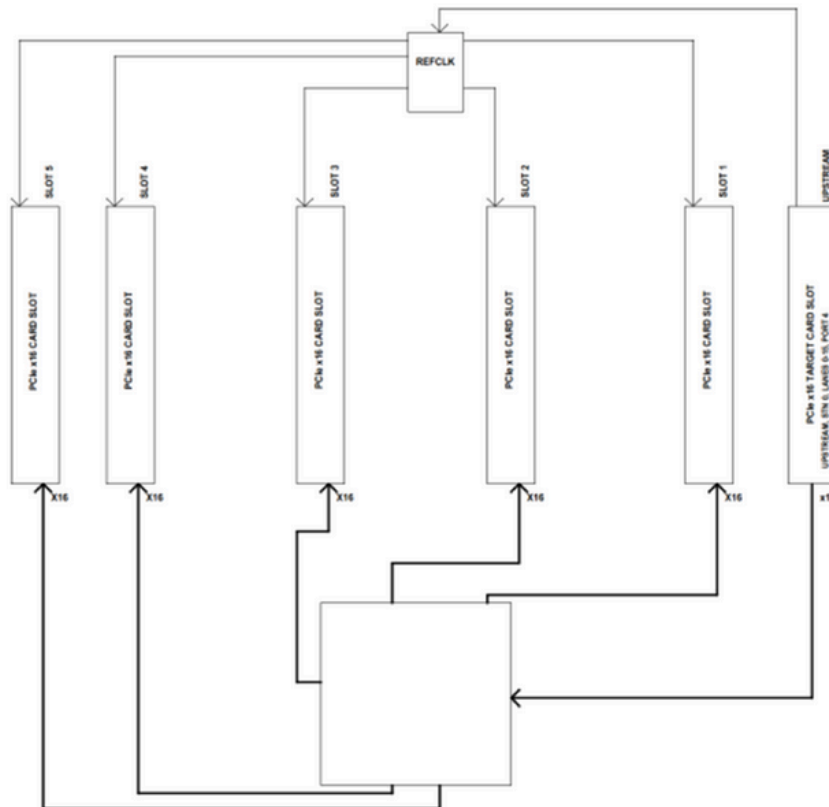
5-Slot PCIe Gen3 x16

Compact PCIe Gen3 expansion backplane with five x16 slots for professional data centers and workstations

5-Slot PCIe Gen3 x16	
FEATURES	
Form Factor	PCIe expansion backplane
Slots	1x OSS PCIe Gen3 x16 Gen target slot (only for OSS target adapter cards) 5x PCIe Gen3 x16 expansion slots (electrical and mechanical)
PCIe Switch	PLX
ENVIRONMENTAL	
Power Connection	ATX 24-pin connector 8-pin EPS12V connector
Operating Temperature	0°C ~ 50°C
Storage Temperature	-40°C ~ 85°C
Humidity	Operation: 10% ~ 95%, non-condensing Non-Operation: 5% ~ 95%, non-condensing
Dimensions	182 x 224mm
Certifications	FCC Class B, CE, RoHS

Note: The power ON connector is only used in Thunderbolt cable configurations. Forcing the power ON in PCIe configurations using the header connector on the backplane may cause the expansion backplane to not enumerate properly with the host system.

Block Diagram



Connector	Defintion
J1	Force Power On
J2	Heatsink Fan Header
J9	ATX Power Input Connector
J14	EPS12V Input Connector

5-Slot PCIe Gen3 x16

Compact PCIe Gen3 expansion backplane with five x16 slots for professional data centers and workstations

J1-Force Power On (Molex P/N: 22-05-3021)

Pin	Defintion
1	PS_ON#
2	GND

J2-Heatsink Fan Header (Molex P/N:53398-0271)

Pin	Defintion
1	FANPWR_PEX
2	GND

J14-Input Power (Molex P/N: 87427-0802)

Pin	Defintion	Pin	Defintion
1	GND	5	+12V
2	GND	6	+12V
3	GND	7	+12V
4	GND	8	+12V

J9-Input Power (Molex P/N: 39-30-1240)

Pin	Defintion	Pin	Defintion
1	+3.3V	13	+3.3V
2	+3.3V	14	-12V
3	GND	15	GND
4	+5V	16	PS_ON#
5	GND	17	GND
6	+5V	18	GND
7	GND	19	GND
8	PWRON	20	NC
9	+5VSB	21	+5V
10	+12V1	22	+5V
11	+12V1	23	+5V
12	+3.3V	24	GND